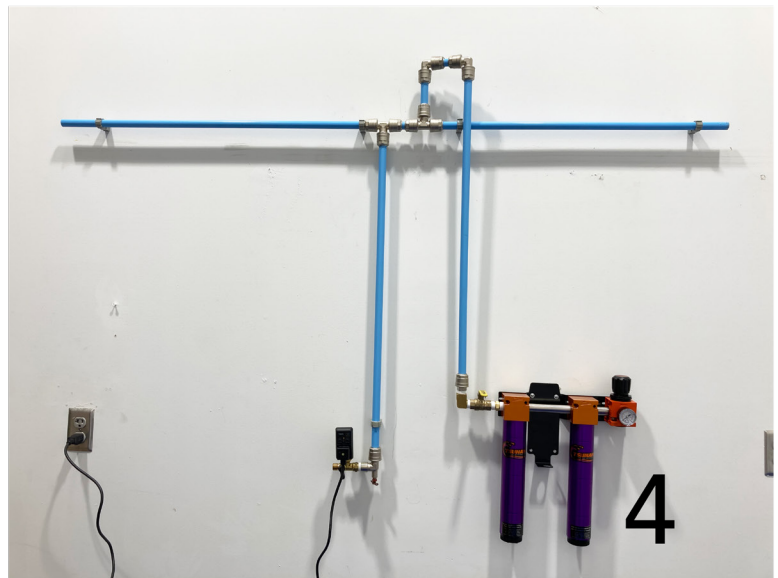
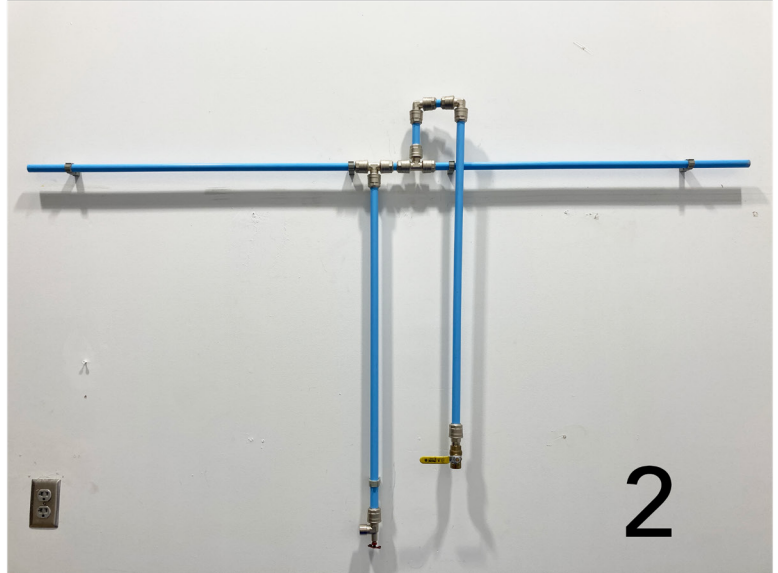
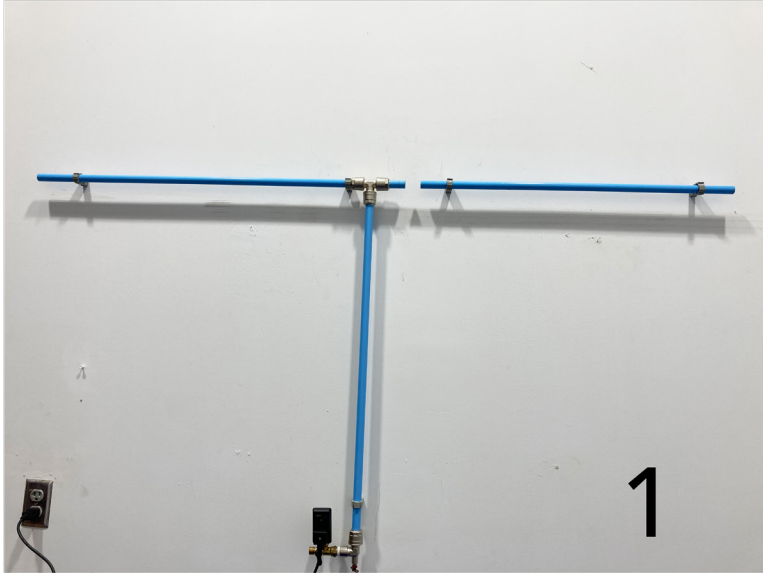


FILTER INSTALLATION GUIDE



FOR MORE INFORMATION ON TSUNAMI

Contact Your Parts Supplier or Call 1.800.782.5752

10531 Dalton Ave NE | Monticello, MN 55362 | TSUNAMI.US.COM

1 DETERMINE PLACEMENT FOR THE FILTER PACKAGE

Look for a location relatively close to the application and after a drip leg to install a riser pipe. Decompress the system and open up ball valves. For safety reasons, ensure there is no air pressure in the piping and safety glasses are worn during the installation.

2 INSTALL A RISER PIPE

Determine the size and placement of your pipe T-fitting and cut the pipe. Slide the fitting into place, adjust to ensure it is in an upright position, and lock into place. Place the pre-plumbed riser pipe system in the T-fitting and lightly secure. Do not lock into place at this step. Install a ball valve at the bottom of the pipe for easy pressurization and filter maintenance.

3 INSTALL THE FILTER PACKAGE

Slide the filter package onto the pipe. Mark off and drill holes for mounting onto the wall. Screw or bolt the filter package to the wall. Install the gauge for the regulator.

4 TIGHTEN ALL PIPE CONNECTIONS

Ensure all fitting and connections are snugly tightened to ensure a solid seal. Pressurize your system.



WATCH INSTALLATION VIDEO

In-Line Filter Installation



The Tsunami Water Separator can be mounted in-line or with a mounting bracket, directly off the drip leg.

When doing this, be certain your air piping brackets are capable of supporting the filter weight.

It is possible to attach the Water Separator directly to the drip leg to remove bulk liquids and particulates from the air system. Install a ball valve and 1/2" NPT fittings, then install the Water Separator in the direction of flow. Attach the Water Separator to wall, either directly or with a mounting bracket.



WATCH INSTALLATION VIDEO